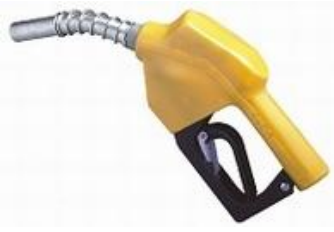


AUTOMATIC NOZZLES



RY-11A



RY-11B



RY 13A



RY-11AP



RY-11BP



RY 13AP

High-flow Nozzle & Measuring Nozzle



RY-120L



RY-A1250



RY-A1295



LLY-25/32



RY-3M



RY-4M



ZVA-25

Spare Parts of Automatic Nozzle

Spout



For RY-11A/11AP/11B/11BP



For RY13A/13AP Nozzle

Plastic Insulator



For RY 11A /11AP



For RY11B /11BP



For RY 120L



For RY 13A/13AP

Lever and Lever-Guard Assembly



For RY 11A / 11B / 120L Series



For RY 13A/13AP



For RY11A / 11B Series

Nozzle Assemblies



For RY11A /11AP/ 120L Series



For RY11B/11BP



For RY13A/13AP

Swivels and Couplings



241TPS Hose Swivel
3/4" F × 3/4" M (NPT / BSPT)



45 Series Hose Swivel
3/4" & 1" NPT/BSPT



JGHB

3/4" & 1" NPT/BSPT



JGH

3/4" & 1" NPT/BSPT



JGDB



JGD

3/4" & 1" NPT/BSPT



36S8 Swivel

3/4" & 1" NPT/BSPT (Female)
× M34 × 1.5 (Male)



36S7 Swivel

3/4" & 1" NPT/BSPT (Male)
× 3/4" & 1" NPT/BSPT (Female)



REAYO Technology CO., LTD

Breakaway Valve



ZVA breakaway Valve
G-1"MalexM34*1.5Male
G-1"FemalexM34*1.5Male



BC-YC Valve
NPT / BSPT3/4"×NPT / BSPT3/4"
NPT / BSPT 1" ×NPT / BSPT 1"



RY-TL Valve
NPT / BSPT 3/4"
NPT / BSPT 1"

Oil Viewing Device



Inlet thread: NPT1"&BSPT1",
NPT3/4"&BSPT3/4" M33X1.5
Flow range: 0-60L/M
Nominal pressure: 0.18Mpa



Inlet thread: NPT& BSPT1", NPT&BSPT3/4"
3/4": 480× 250× 350mm
1": 470× 250× 410mm
Nominal pressure: 0.18Mpa

Solenoid Valve



Specification:

Specification	mSF-15	mSF-20	mSF-25
Nominal diameter	15mm	20mm	25mm
Flow Rate	35L/M	50L /M	70L /M
Nominal pressure	1.6 MPa		
Voltage	AC220V、 AC110V 50Hz/60Hz DC24V 、 DC12V		
Ambient Temperature	-40℃ ~ +55℃		
Connection	Thread /Flange		

Bottom Valve



Single-door bottom valve



double-door bottom valve

We provide bottom valves with DN40(1.5'')/DN50(2'')/DN80(3'')/DN100(4'') for customers to meet various requirements.

Angle Check Valve



DJB Valve

1-1/2" (Height: 116mm)
/
2" (Height: 123mm)

Pull-off valve for oil & gas recovery

Thread: M34*1.5

Material: aluminum alloy

Max. Flow rate: 50L/min

Pull-off Valve for vapor recovery



Pumps & Flowmeters



ZYB-50 Pump



CBH-80 Pump



ZCB-90 Pump



oil-submerged pump



AHCB-2-400 Pump



AHCB-2-650 Pump



ZCH-50 Pump



ZLXB80 Pump



HCB-1000/300 pump



EXP-800-80 Pump



HPB-50/80 Pump



YB-50 pump



YB-100 pump

Flowmeter



RSJ-50 flow meter



HAPA flow meter



RY-65 flow meter



RY-473 flow meter



RY-85 flow meter



LPG flow meter



OGM-R-25 flow meter



OGM-R-40 flow meter



OGM-25-E flow meter



OGM-A-25 flow meter



OGM-50-E flow meter



OGM-I-50 flow meter

REAYO Technology CO., LTD



FMC series flow meter



SM series flow meter



M series flow meter



FM-120 flow meter



FM-150 flow meter



OGM-50 flow meter

Electric Oil Pump



ETP-60 pump assembly



ETP-40B pump assembly



ETP-50A pump assembly



DYB-60 electric pump



EXP-50 electric pump



Ex Motor YBJY-80M2-4

Fuel Filters



Filter (replace Gilbarco)



GL-7 filter



GL-4M filter



FSP-50/80 filter



Filter mesh for FSP-50/80 filter



Filter for ZYB-50 pump



Vehicle-mounted filter



Filter 10/30/60 micron



GL-5 Filter

Fuel Hose



Conductive fuel hose DN16/19/25



Composite hose



PVC hose

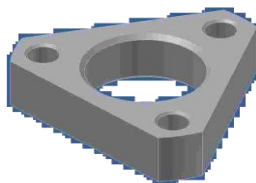


LPG hose



Hose for Oil & gas recovery

Bellows



Flange KC-02



Bellows gasket

We provide various corrugated pipes with DN25mm~DN100mm.

LPG dispenser Parts



LPG nozzle



LPG pump HCB-150



LPG pump-2000



LPG flow meter



LPG hose



LPG drop-off valve



LPG nozzle holder



LPG separator



LPG Solenoid Valve



LPG differential valve

Oil Tank Truck Parts



Manhole cover



Pneumatic interlock valve



joystick



Sub-sea valve HDF-100S



HDF-80S



HDF-80NQ



HDF-100TQ



Oil discharge joint



Oil drain valve



Pneumatic combination switch



dust-proof cover



Dry coupler RY-801

REAYO Technology CO., LTD

Oil & Gas Recovery Series



Hose for vapor recovery



Fuel nozzle



breakaway valve



Pump VRB-60



Pump VYB-110



Filter

Other Parts



Quick couplings



Oil drum pump



Measuring can



Pulse



Emergency Cut-off Valve

